

## Newsletter

### Thomson Power Systems Technical Service Support 2014

Thomson Power Systems has expanded and re-organized its Technical Services Support network in 2014. The following information outlines how to contact Technical Services organization and where regional office support is located.

#### After Sales Service Support

Our Service support group can assist you with Thomson Power Systems\*\* equipment that has completed commissioning.

Contact our **Service Support** group for:

- Warranty Service Work
- Component Repair/Replacement
- Field Service Call Scheduling
- Preventative Maintenance Work
- Training
- Site Upgrades/Modification Work

#### Product Support Contact:

**Max Moeini, P.Eng**

Technical Services Manager

Tel: (604)-888-0110 ext. 6320

Direct: (604)-513-6320

Fax: (604)-888-3381

Toll Free: 1(888)-888-0110 ext.6320

Email: [mmoeini@thomsontechnology.com](mailto:mmoeini@thomsontechnology.com)

#### After Hours (24/7) Emergency Support Contact:

**(604)-888-0110 press 1**

*\*\* Includes Products branded Thomson Technology & Schmidtec Power Systems*

### Regional Office Service Support

Langley, B.C.

Toronto, Mississauga

Las Vegas, NV

New York, NY

#### Contact Information

Tel: 604-888-0110 press 1

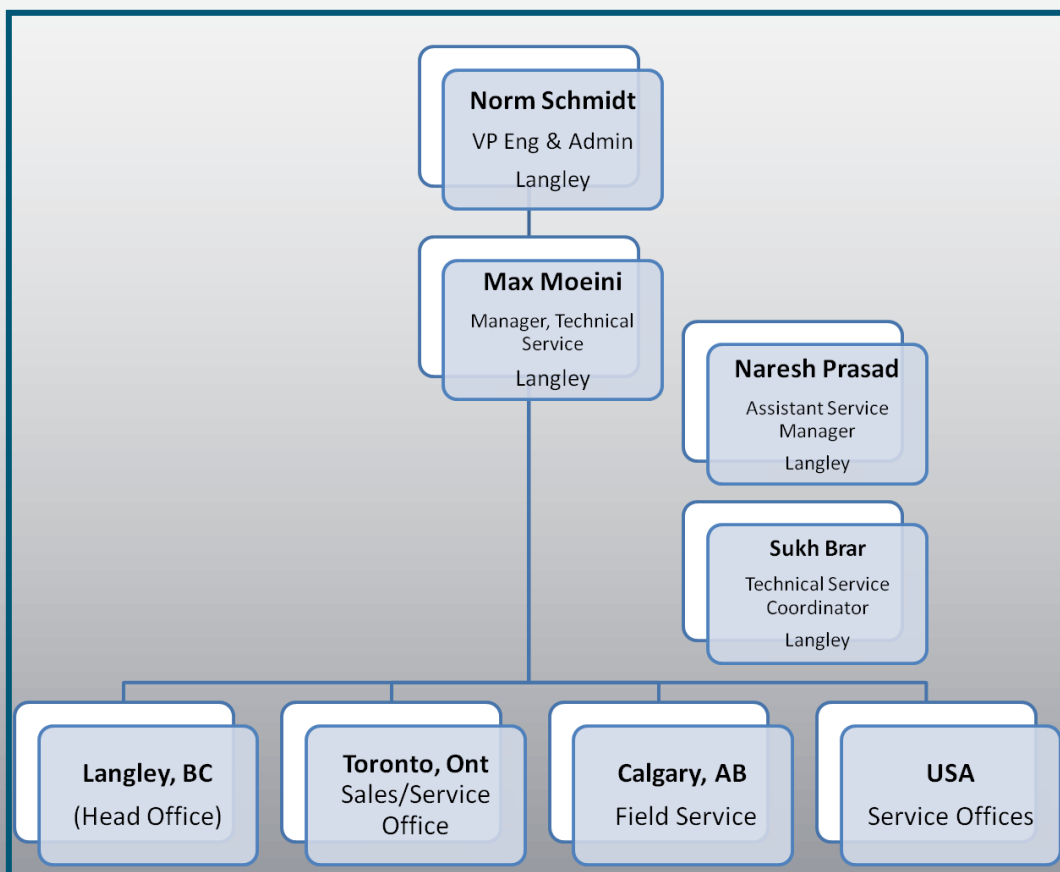
Direct: 604-513-6397

Fax: 604-888-3381

Toll Free: 1-888-888-0110  
ext. 6397

Email: [support@thomsonps.com](mailto:support@thomsonps.com)

## Technical Services Organization



When contacting our Technical Service department, it is necessary for you to have the product serial number available.

**Thomson Power Systems**  
Quality • Reliability • Commitment

9087A—198th Street  
Langley, B.C. V1M 3B1  
PH: 604-888-0110  
Fax: 604-888-3381  
Email: [info@thomsonps.com](mailto:info@thomsonps.com)  
[www.thomsonps.com](http://www.thomsonps.com)